

ZeroWeb Manual



Securities offered to you by [TradeZero America, Inc](#)

Contents

WATCH LIST	3
CHARTS	4
LEVEL 2, TIME and SALES, ORDER ENTRY	6
SHORT LIST and LOCATES	7
NEW WINDOWS and LAYOUT	8
NEWS	8
PORTFOLIO: OPEN ORDERS / CLOSED POSITIONS / OPEN POSITIONS	9
HOT- KEYS AND SETTINGS	10

WATCH LIST

Symbol	CCY	Open	Close	Last	Bid	Ask	High	Low	%Chg	\$Chg	Vol	Time
X T	USD	35.340	35.170	35.290	35.280	35.290	35.380	35.100	0.341	0.120	3,960,356	10:31:49
X NOK	USD	5.530	5.410	5.530	5.520	5.530	5.530	5.530	2.218	0.120	4,271,930	10:31:50
X MSFT	USD	92.390	90.770	92.300	92.300	92.310	92.970	91.640	1.686	1.530	5,628,783	10:31:50
X TSLA	USD	298.970	289.660	302.120	302.070	302.330	304.360	293.680	4.302	12.460	3,726,185	10:31:50
X GE	USD	13.010	12.830	13.066	13.060	13.070	13.135	12.990	1.839	0.236	14,371,888	10:31:50
X GS	USD	257.960	252.190	259.250	259.150	259.260	259.580	256.230	2.799	7.060	767,685	10:31:50
X AXP	USD	93.330	92.140	93.345	93.330	93.360	93.530	92.610	1.308	1.205	357,132	10:31:47
X RAD	USD	1.610	1.610	1.645	1.640	1.650	1.660	1.610	2.174	0.035	2,443,843	10:31:46
X GOOG	USD	1026.440	1015.450	1020.000	1019.500	1020.350	1027.410	1012.000	0.448	4.550	646,809	10:31:42
X FB	USD	157.660	157.930	160.390	160.390	160.420	160.740	157.010	1.558	2.460	11,074,568	10:31:50
X C	USD	71.000	69.440	70.910	70.900	70.910	71.130	70.450	2.117	1.470	3,766,580	10:31:49
X MMM	USD	215.320	212.810	217.830	217.760	217.830	218.130	215.300	2.359	5.020	560,963	10:31:50
X D	USD	66.380	66.370	66.050	66.040	66.050	66.520	65.960	-0.482	-0.320	723,789	10:31:46

The watch list window provides a real-time, tick-for-tick streaming view of user defined symbols. Users can set a custom list of symbols to watch. The watch list can be linked to a specific group of windows.

To link select the link icon in the top right corner of the window and select a link group.

Symbol	CCY	Open	Close	Last	Bid	Ask	High	Low	%Chg	\$Chg	Vol	Time
X T	USD	35.340	35.170	35.290	35.290	35.300	35.380	35.100	0.341	0.120	4,018,	
X NOK	USD	5.530	5.410	5.530	5.520	5.530	5.530	5.530	2.218	0.120	4,435,	
X MSFT	USD	92.390	90.770	92.370	92.370	92.380	92.970	91.640	1.763	1.600	5,708,	
X TSLA	USD	298.970	289.660	302.320	302.020	302.330	304.360	293.680	4.371	12.660	3,754,	
X GE	USD	13.010	12.830	13.060	13.060	13.070	13.135	12.990	1.793	0.230	14,529,	
X GS	USD	257.960	252.190	259.600	259.500	259.580	259.600	256.230	2.938	7.410	796,474	10:33:33
X AXP	USD	93.330	92.140	93.490	93.530	93.570	93.530	92.610	1.465	1.350	371,734	10:33:33

No Group ▾

No Group

Group A

Group B

Group C

Group D

Group E

CHARTS



ZeroWeb charting provides the user with the ability to open multiple chart windows simultaneously. Users can set up either intraday or daily charts. To change the stock symbol type into the symbol box and hit enter on your keyboard.



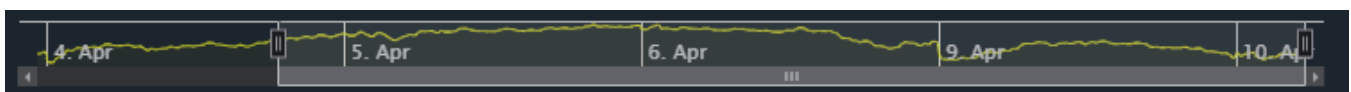
Users can select a line drawing tool for marking chart levels and the ability to select indicators.



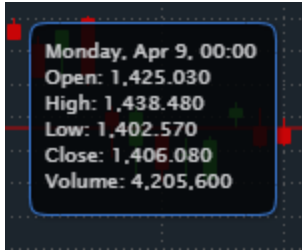
Pre and post charting is available, simply checking the pre/post box enables and disables this feature.



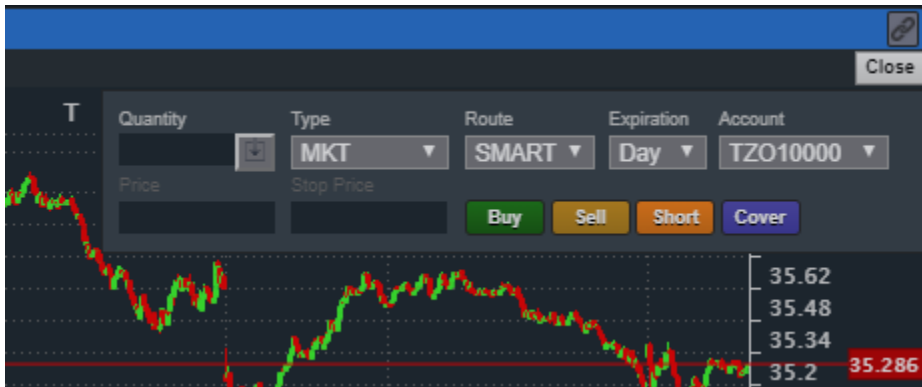
The chart window can be linked to a window group. To link select the link icon in the top right corner of the window and select a link group.



The chart can be zoomed in or out by clicking and dragging the chart task bar right and left.



Hoovering the mouse over any section of the chart will provide more detailed information.



Users have the ability to open an order entry window directly from the chart by clicking on the order icon in the top right section of the chart.

LEVEL 2, TIME and SALES, ORDER ENTRY

The screenshot displays a Level 2 market data window. At the top, it shows the current price of 35.250, a change of 0.080 (0.23%), and a volume of 100. Below this, it lists the Open (35.340), Close (35.170), High (35.380), Low (35.100), and VWAP (35.361). The Bid is 35.240 with a BSize of 54, and the Ask is 35.250 with an ASize of 48. The exchange is NYSE.

Symbol	Price	BSize	Exchange	Price	ASize	Price	Volume	Time
BATS	35.240	54	NYSE	35.250	48	35.250	1	11:13:23
NYSE	35.240	40	NSDQ	35.250	14	35.245	1	11:13:22
NSDQ	35.240	30	NQEX	35.250	14	35.245	1	11:13:20
NQEX	35.240	30	BATS	35.250	12	35.245	1	11:13:18
PACF	35.240	8	EDGX	35.250	10	35.245	1	11:13:18
EDGX	35.240	7	PACF	35.250	5	35.245	2	11:13:18
BATY	35.240	6	IEX	35.250	2	35.245	1	11:13:17
IEX	35.240	6	BATY	35.250	1	35.245	1	11:13:17
BOST	35.240	2	AMEX	35.250	1	35.245	1	11:13:17
PHIL	35.240	2	BOST	35.260	7	35.245	1	11:13:17
AMEX	35.240	1	PHIL	35.260	1	35.245	1	11:13:17
EDGE	35.230	1	EDGE	35.270	2	35.245	1	11:13:17
GSCO	34.690	32	GSCO	35.840	32	35.245	1	11:13:17
SUNT	34.560	1	SUNT	35.840	1	35.245	1	11:13:16
XGMD	33.830	1	SSUS	36.640	1	35.245	1	11:13:16

Buying Power: 2000.00 Multiplier: 1

Quantity: [] Type: MKT Route: SMART Expiration: Day Account: TZO10000

Price: [] Stop Price: []

Buttons: Buy, Sell, Short, Cover, Cancel

The level 2 window provides in-depth bids & offers, time and sales and detailed stock information. The bottom section of the level 2 is the order entry window allows the user to buy, sell or short the stock that is loaded into the level 2 screen. Price, volume, order type, route and expiration can be set from this window. Symbols can be entered into the symbol box on the top left input box.



The level 2 can be linked to a window group. To link, select the link icon in the top right corner of the window and select a link group.

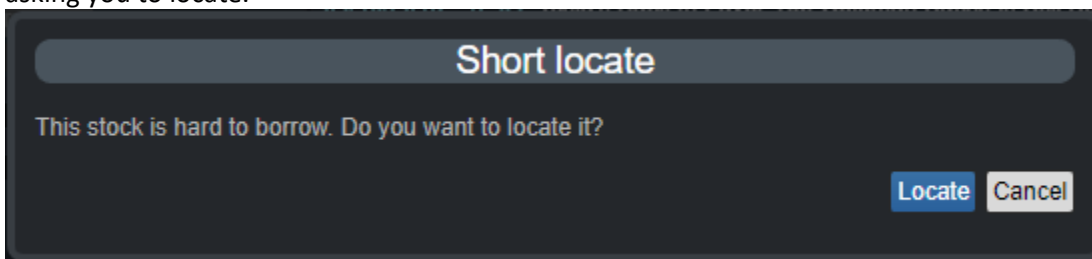
The platform supports: Market, Limit, Stop Market, Stop Limit and Range Orders. Range orders can be set with a high and low price, meaning, if a long position exists, placing a range order with a price below current trading price and a price above current trading price, when one of those prices are met, the position will be sold, and the opposite side cancelled. These orders are placed as a bracket. This means that if one side is cancelled, the other will also be cancelled. This is a powerful order type that can babysit a position, stopping the position out of the low price is triggered or selling for a profit of the high price is hit.

● T S	
Symbol	35.300 0.130 0.37%
Open	35.340 Close 35.170 High 35.380 Low
Bid	35.290 BSize 35 Ask 35.300 ASize

To determine if a stock is on the easy to borrow list and can be shorted a green letter “S” must be displayed in the top left section of the level 2 window.

● TSLA NS	
Symbol	304.800 15.140 5.23%
Open	298.970 Close 289.660 High 306.140 Low
Bid	304.640 BSize 2 Ask 304.850 ASize

If a stock is not on the easy to borrow list it will display a red “NS”. This indication means the stock is hard to borrow (HTB) and must be located. When an order is placed to short a stock that is on the HTB a pop will display asking you to locate.

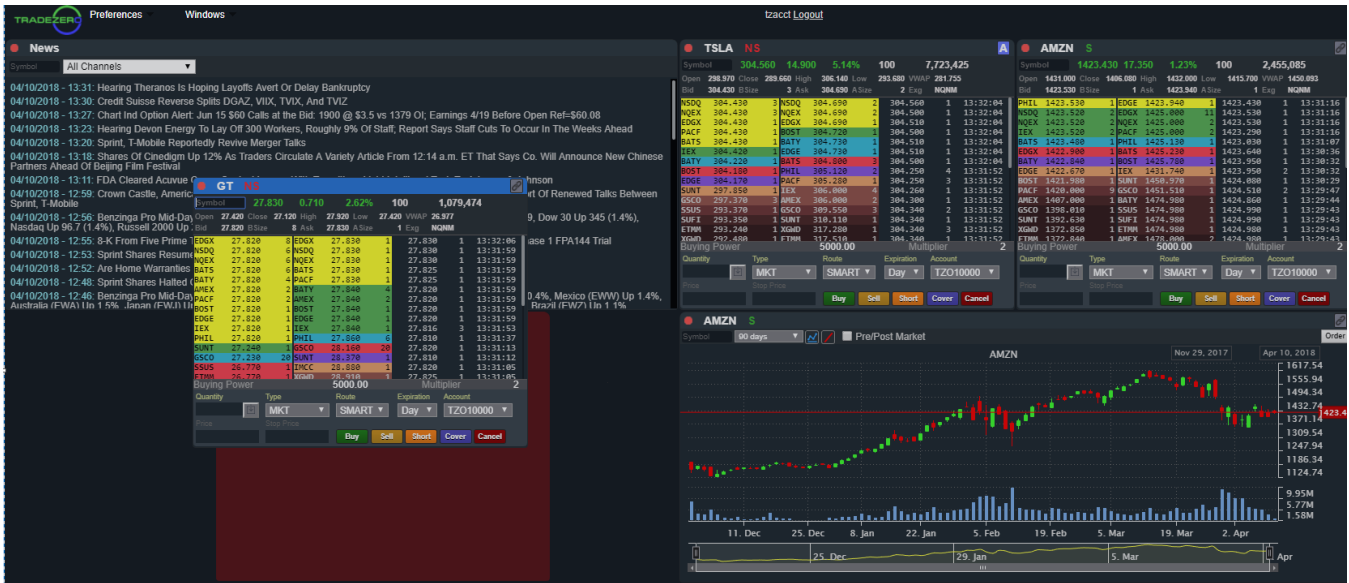


SHORT LIST and LOCATES

● Short List						
USO	100	TZO10000	Locate			
Hard to Borrow						
Symbol	Account	Status	Price	Shares	Total	Action
USO	TZO10000	Located	0.013	100	\$ 1.30	<input checked="" type="checkbox"/> <input type="checkbox"/>
SPY	TZO10000	Expired	0.005	100	\$ 0.50	<input type="checkbox"/> <input checked="" type="checkbox"/>
SPY	TZO10000	Expired	0.005	100	\$ 0.50	<input type="checkbox"/> <input checked="" type="checkbox"/>
SPY	TZO10000	Expired	0.005	100	\$ 0.50	<input type="checkbox"/> <input checked="" type="checkbox"/>
USO	TZO10000	Expired	0.013	100	\$ 1.30	<input type="checkbox"/> <input checked="" type="checkbox"/>
SPY	TZO10000	Expired	0.005	100	\$ 0.50	<input type="checkbox"/> <input checked="" type="checkbox"/>
SIRI	TZO10000	Expired	0.005	100	\$ 0.50	<input type="checkbox"/> <input checked="" type="checkbox"/>
TSLA	TZO10000	Expired	0.014	100	\$ 1.40	<input type="checkbox"/> <input checked="" type="checkbox"/>
SPY	TZO10000	Expired	0.005	100	\$ 0.50	<input type="checkbox"/> <input checked="" type="checkbox"/>

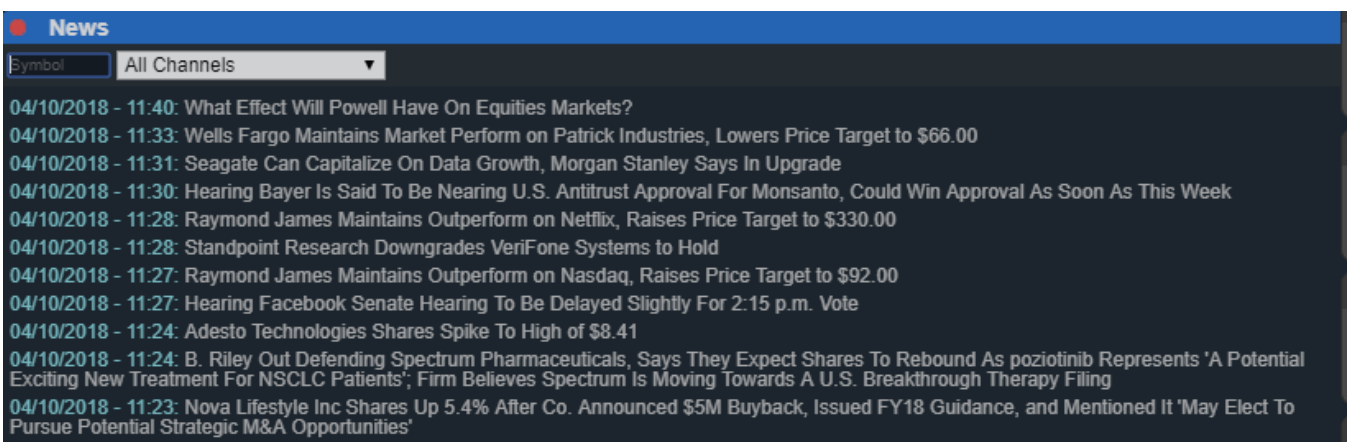
Users can easily check if stocks are easy to borrow (ETB) or hard to borrow (HTB) by using the search function in the Short list window. Enter a symbol and the required number of shares to locate, the search will return a total price for that query. To accept the shares the green check mark must be clicked. To cancel the request, simply check the red X box. Shares that are located remain with the user for the entire trading day. That symbol can be traded as often as the user would like.

NEW WINDOWS and LAYOUT



New windows can be added to your layout by selecting the WINDOWS icon in the top left section of the program. Windows can be moved and dropped to different sections of your layout by left click, hold and dragging the window into the area the user would like.

NEWS



The news window streams news stories in real-time. If a filter is applied by symbol or keyword such as earnings, only those stories will appear in the window. Double clicking on any headline will bring up the entire text of the article in a new browser tab or window.

PORTFOLIO: OPEN ORDERS / CLOSED POSITIONS / OPEN POSITIONS

Portfolio
 Account: TZO10000 Buying Power: 5000.000
 Multiplier: 2

Open Positions													Closed Positions		Orders	
Ref No.	Symbol	Exp.	P/C	Strike	Side	Qty	Type	Status	TIF	Limit	Stop	Placed				
X S.4408271	GE	-	-	-	Short	-10	LMT	N	DAY	15.000	-	04-10 11:48:56				
X S.4408137	SIRI	-	-	-	Buy	10	LMT	N	DAY	6.000	-	04-10 11:46:03				
X S.4408128	T	-	-	-	Buy	10	LMT	N	DAY	33.000	-	04-10 11:45:55				

Inactive Orders

Ref No.	Symbol	Exp.	P/C	Strike	Side	Qty	Type	Status	TIF	Price	Limit	Stop	Placed
S.4408170	GE	-	-	-	Short	-10	LMT	R	DAY	-	15.000	-	04-10 11:46:35
S.4408161	GE	-	-	-	Short	-10	LMT	R	DAY	-	15.000	-	04-10 11:46:29
S.4408152	GE	-	-	-	Short	-10	LMT	R	DAY	-	15.000	-	04-10 11:46:23
S.4408117	T	-	-	-	Buy	10	LMT	C	DAY	-	34.000	-	04-10 11:45:46
S.4398402	SIRI	-	-	-	Buy	13	MKT	F	DAY	6.300	-	-	04-10 09:34:02
S.4398397	SIRI	-	-	-	Buy	12	MKT	F	DAY	6.300	-	-	04-10 09:33:59
S.4398384	SIRI	-	-	-	Buy	11	MKT	F	DAY	6.300	-	-	04-10 09:33:52
S.4398049	SIRI	-	-	-	Buy	10	MKT	F	DAY	6.300	-	-	04-10 09:31:32

The Portfolio window has 3 tabs: Open Positions, Closed Positions and Orders tab.

The Orders tab shows all of the users' open and partially filled orders. Open orders can be cancelled by clicking the "X" next to the corresponding order. Once an open order is partially or fully executed, the order will disappear from the Open Orders tab and then appear in either the Open or Closed Positions tabs of the window.

Portfolio
 Account: TZO10000 Buying Power: 4869.000
 Multiplier: 2

Open Positions													Closed Positions		Orders	
Symbol	Type	Exp.	P/C	Strike	Qty	Entry	Last	PNL	%Day Chg	Day Chg	Overnight					
F	Long	-	-	-	10	11.310	11.510	2.000	0.524	0.060	Yes					
GE	Short	-	-	-	-10	13.040	13.050	-0.100	0.307	0.040	No					
SIRI	Long	-	-	-	146	6.299	6.295	-0.584	-0.396	-0.025	No					
SPY	Long	-	-	-	10	263.305	265.129	18.240	0.333	0.879	Yes					

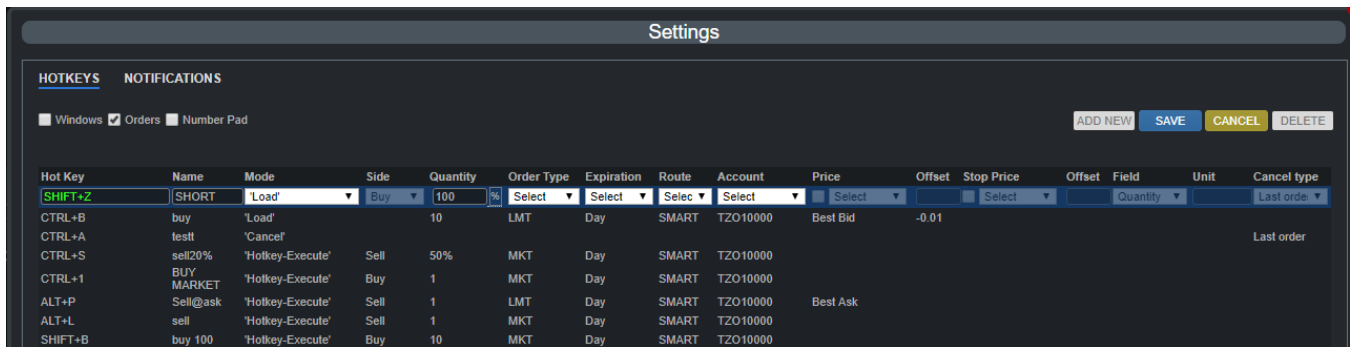
The Open Positions window will show all open positions that the account is holding as well as display a real-time profit or loss for each position based on the entry price.

Portfolio
 Account: TZO10000 Buying Power: 5000.000
 Multiplier: 2

Open Positions													Closed Positions		Orders	
Symbol	Type	Exp.	P/C	Strike	Qty	Entry	Close Price	Realized	Opened	Closed						
F	Long	-	-	-	10	11.310	11.510	2.002	04-09 10:34:07	04-10 11:57:01						
GE	Short	-	-	-	10	13.040	13.060	-0.199	04-10 11:55:13	04-10 11:56:37						
SIRI	Long	-	-	-	146	6.299	6.300	0.209	04-10 09:31:10	04-10 11:57:15						
SPY	Long	-	-	-	10	263.305	265.140	18.351	04-09 11:23:17	04-10 11:57:31						

The Closed Position window reflects all closed positions and the realized profit or loss for each closed position.

HOT- KEYS AND SETTINGS



To configure hot keys, go to preferences in the top left section of software and select settings.

There are many different types of hot keys that can be used for trading in ZeroWeb. The combination of setting up all key types will allow for complete trading using the keyboard.

The hot keys types and their corresponding functionality is as follows:

Windows Hot-Keys:

This key type is used to allow for toggling between all allowable windows inside of the layout.

Orders Hot-keys:

Window Load: This key type will allow order setups to be added to the Level 2. This will not send an order but rather an order setup. Once loaded the order can be modified with the increment/decrement keys for price and volume. Once the order is ready to be sent, the order can be fired using the ENTER key.

Hot-keys can be configured based on quantity position or percentage of shares.

Limit prices can be adjusted by the offset field. If a Buy Bid order type is desired, an offset of .01 will create a Bid + .01 order.

Hot-key execute:

This is a traditional hot key where once setup, will send an order straight away for the symbol that is in the Level 2 window that is in focus.

Window Execute:

This basically sends an order for whatever settings are set in the currently focused Level 2 window.

Cancel:

This allows for cancel keys to be set. The options are cancelled last or cancel all orders.

Increment Decrement:

This key allows users to set increment and decrement values for volume and price.